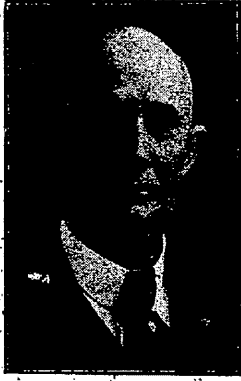


OFFICERS and DIRECTORS EL PASO CHAMBER of COMMERCE—Cont'd.

BANKER



C. M. HARVEY
President Security Bank & Trust Co.

FEED AND FUEL



E. C. HEID
President Heid Bros, Inc.

PRINTING



W. M. S. McMATH
President McMATH Printing and Lithographing Co. President Employing Printers Assn.

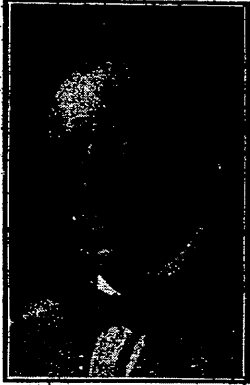
RETAIL MERCHANT



FABIAN STOLAROFF
Boston Store

CHAIRMAN-DIRECTORS EL PASO CHAMBER of COMMERCE

JOBBER



ED. SANDERS, Chairman
Director Jobbers Dept., President China Palace

FARM IMPLEMENTS



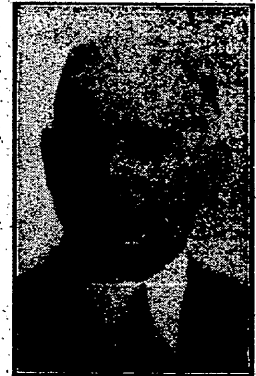
H. L. BIRNEY, Chairman
Director Agricultural Department, Farm Implements Myers & Co.

MANUFACTURER



L. GARDNER, Chairman
Director, Manufacturers Department, Manager Empire Bottling Works

AUTOMOTIVE TRADES



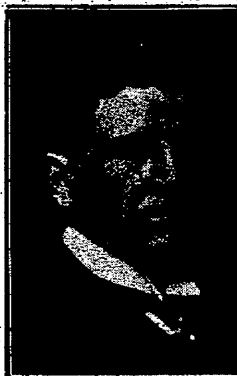
F. M. BANNELL, Chairman
Director, Automotive Trades Department, proprietor El Paso Overland Co.

RETAIL MERCHANT



SCOTT C. WHITE, Chairman
Director Retail Merchants Dept., President El Paso Adclub, President Scott White Co. (Drugs)

BANKER



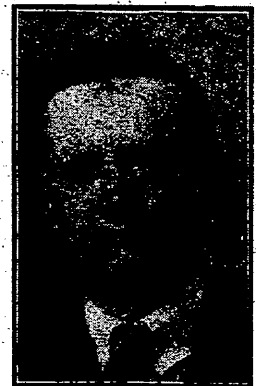
JAMES G. McNARY, Chairman
Director Governmental Research Dept., president First National Bank and El Paso Music Association

BANKER



CRAWFORD HARVIE, Chairm'n
Director Industrial Dept., President Border National Bank

MANUFACTURER AND JOBBER



A. U. DAUGHDRILL, Chairman
Director Traffic Dept., Manager Welch Bedding Co.