

Thomas-Pease Motor Company

EL PASO, TEXAS

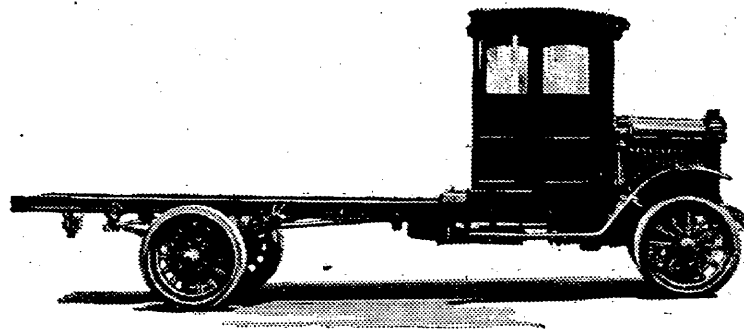
*SOUTHWESTERN DISTRIBUTORS
FOR THE*



Motor Trucks

In War and in Peace

Patriot Trucks have established a new precedent. For durability, service, economy, and performance it is unexcelled under capacity loads.



MANUFACTURED IN THREE POPULAR SIZES

REVERE MODEL

1500 to 2500 Pound Capacity

LINCOLN MODEL

3,000 to 5,000 Pound Capacity

WASHINGTON MODEL

5,000 to 7,000 Pound Capacity

Some Good Territory Open for Dealers

WRITE FOR DETAILS