



HIGHLAND PARK ADDITION

EAST EL PASO ADDITION

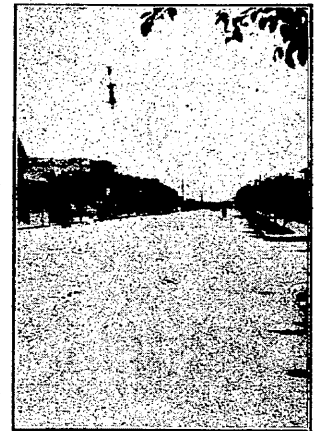
SATTERTHWAITE ADDITION



PARK SCENE

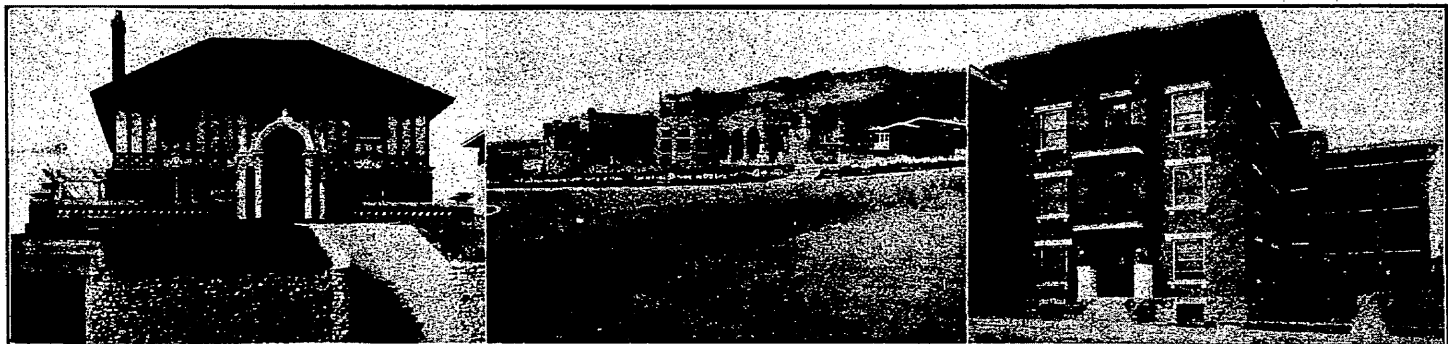
El Paso has 150 acres of  
Parks valued at \$2,400,000  
500 acres in contemplation.

El Paso is essentially a city of modern homes and flourishing institutions. Her citizens are gathered from every section of the globe. They have been accustomed to the best and demand modern accommodations and conveniences. El Paso has 142 exclusive apartment houses. The bungalow is the prevailing type of residence. They are almost invariably of brick, concrete, or stucco. There are very few frame buildings in the city. Each residence shown is typical of a residential section. There are more than 50 homes in El Paso costing \$17,000 to \$50,000, and hundreds costing over \$10,000. In every sense El Paso is one of the most modern of American cities, and is the only large center between San Antonio and Los Angeles—a distance of 1500 miles.



PAVED BOULEVARD

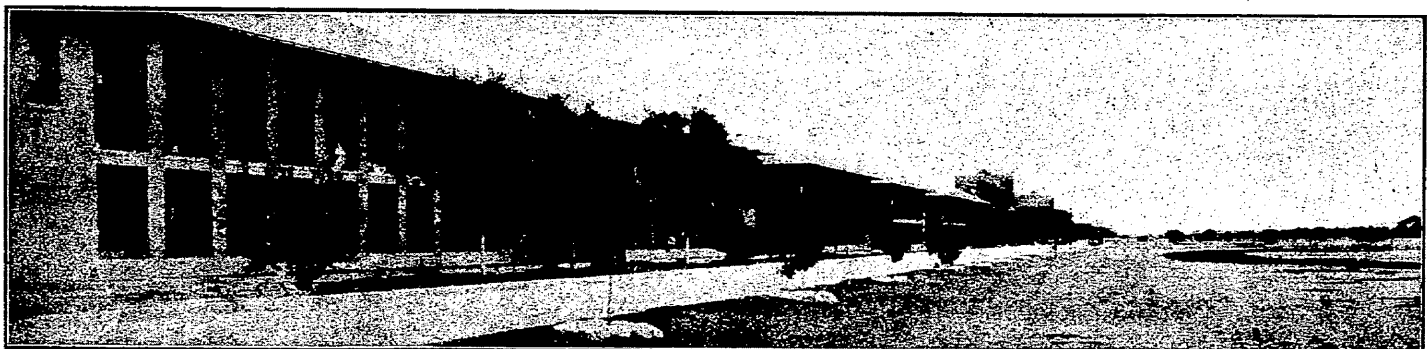
El Paso has 45 miles of bitu-  
lithic paved streets  
100 miles of graded streets



GOLDEN HILL

KERN PLACE

APARTMENT HOUSE



BARRACKS—FORT BLISS—MILITARY RESERVATION