

the southwell co.

p. o. box 299 san antonio, tx 78291
ph. (210) 223-1831 fax (210) 223-8517

- approved (no corrections)
 - approved as noted
 - revise and resubmit
- signed by: _____ date: _____

PLEASE SIGN AND RETURN ONE (1) COPY.
FAILURE TO SIGN THIS PROOF WILL RESULT
IN RESUBMITTAL FOR YOUR SIGNATURE.

Thank You

CUSTOMER:

EL PASO COMMUNITY FOUNDATION
~~3301 GABEL AVE. P.O. BOX 272~~
EL PASO, TX. ~~79904-7993-0272~~

SHIP TO: DESTINATION EL PASO
~~IBD SHIPPING AND RECEIVING~~
ONE CIVIC CENTER PLAZA
EL PASO, TX. 79901

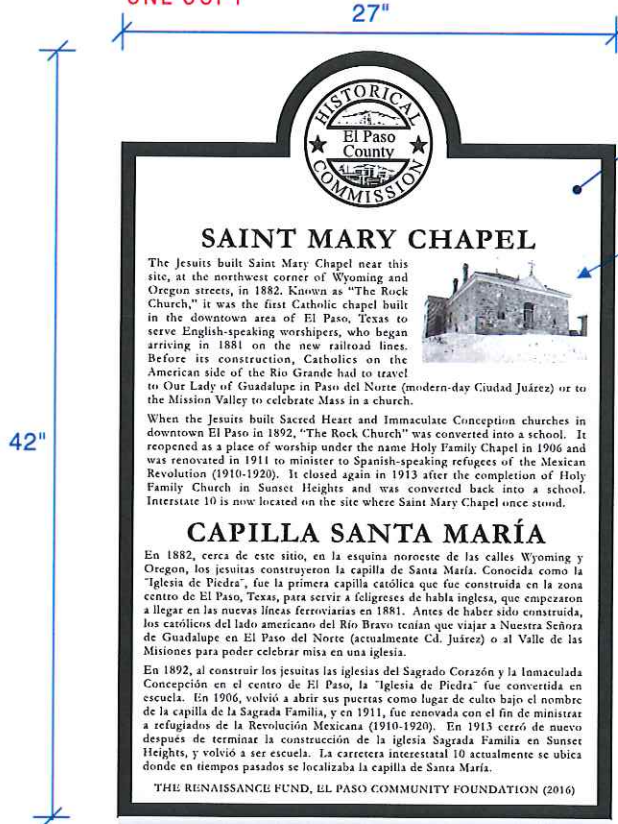
ATTN: TONY DELEON (915) 534-0627(O)
(915) 269-7677(M)

CAST ALUMINUM PLAQUE

27" W X 42" H

SCALE: 1/8" = 1"

↑ PROOFS!
PLEASE SIGN &
RETURN
ONE COPY



BACKGROUND -
BLACK LEATHERETTE

9" X 6" METAL PHOTO
BLACK ON ALUMINUM FIELD

REVISED
6.14.16

REVISED
6.27.16

3-1/2" POST

STOP YOU ARE THE FINAL PROOF-READER STOP

ON THIS DRAWING:
BLACK AREAS ARE RAISED = METAL COLOR
WHITE AREAS ARE RECESSED = DARK / BACKGROUND COLOR

YOUR ORDER WILL BE PRODUCED FROM THE ARTWORK YOU SEE HERE. IF YOU APPROVE THIS ARTWORK AND IT CONTAINS ERRORS, YOU WILL BE HELD FINANCIALLY RESPONSIBLE FOR THE WORK WE DO. PLEASE CAREFULLY CHECK THAT ALL IS CORRECT REGARDING SPELLING, DESIGN, COLOR AND SIZE

QUOTE # 28996 FILE NAME: 28996.CDR
JOB # N/A DATE _____
P.O. # N/A SUBMITTED: 5.27.16
RE: SAINT MARY CHAPEL
DRAWN BY: BRADLEY EVERITT

SPECIFY MOUNTING ATTACHMENTS

- CONCEALED (SOLID WALLS ONLY)
- WOOD SCREWS W/ROSETTES
- EXPANSION BOLTS W/ROSETTES
- TOGGLE BOLTS W/ROSETTES (SHEETROCK / HOLLOW WALLS)

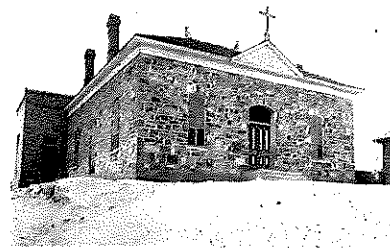
QUANTITY: ONE (1)
MATERIAL: CAST ALUMINUM
FINISH: SEE DRAWING
SIZE: 27" WIDE X 42" HIGH
BORDER: SINGLE LINE
LETTERS: GARAMOND

THE DESIGN OF THIS PLAQUE HAS BEEN MADE USING COMPUTERIZED GRAPHICS. THE ACTUAL PATTERN USED IN CASTING WILL BE MADE BASED ON FINAL APPROVAL OF THIS SUBMITTAL DRAWING. THE FORMAT, LETTER STYLE, LETTER SIZE, SPACING AND MOUNTING ARE BASED ON INDUSTRY STANDARDS AND OUR CAPACITIES TO PRODUCE A HIGH QUALITYCASTING.



SAINT MARY CHAPEL

The Jesuits built Saint Mary Chapel near this site, at the northwest corner of Wyoming and Oregon streets, in 1882. Known as "The Rock Church," it was the first Catholic chapel built in the downtown area of El Paso, Texas to serve English-speaking worshipers, who began arriving in 1881 on the new railroad lines. Before its construction, Catholics on the American side of the Rio Grande had to travel to Our Lady of Guadalupe in Paso del Norte (modern-day Ciudad Juárez) or to the Mission Valley to celebrate Mass in a church.



When the Jesuits built Sacred Heart and Immaculate Conception churches in downtown El Paso in 1892, "The Rock Church" was converted into a school. It reopened as a place of worship under the name Holy Family Chapel in 1906 and was renovated in 1911 to minister to Spanish-speaking refugees of the Mexican Revolution (1910-1920). It closed again in 1913 after the completion of Holy Family Church in Sunset Heights and was converted back into a school. Interstate 10 is now located on the site where Saint Mary Chapel once stood.

CAPILLA SANTA MARÍA

En 1882, cerca de este sitio, en la esquina noroeste de las calles Wyoming y Oregon, los jesuitas construyeron la capilla de Santa María. Conocida como la "Iglesia de Piedra", fue la primera capilla católica que fue construida en la zona centro de El Paso, Texas, para servir a feligreses de habla inglesa, que empezaron a llegar en las nuevas líneas ferroviarias en 1881. Antes de haber sido construida, los católicos del lado americano del Río Bravo tenían que viajar a Nuestra Señora de Guadalupe en El Paso del Norte (actualmente Cd. Juárez) o al Valle de las Misiones para poder celebrar misa en una iglesia.

En 1892, al construir los jesuitas las iglesias del Sagrado Corazón y la Inmaculada Concepción en el centro de El Paso, la "Iglesia de Piedra" fue convertida en escuela. En 1906, volvió a abrir sus puertas como lugar de culto bajo el nombre de la capilla de la Sagrada Familia, y en 1911, fue renovada con el fin de ministrar a refugiados de la Revolución Mexicana (1910-1920). En 1913 cerró de nuevo después de terminar la construcción de la iglesia Sagrada Familia en Sunset Heights, y volvió a ser escuela. La carretera interestatal 10 actualmente se ubica donde en tiempos pasados se localizaba la capilla de Santa María.

THE RENAISSANCE FUND, EL PASO COMMUNITY FOUNDATION (2016)