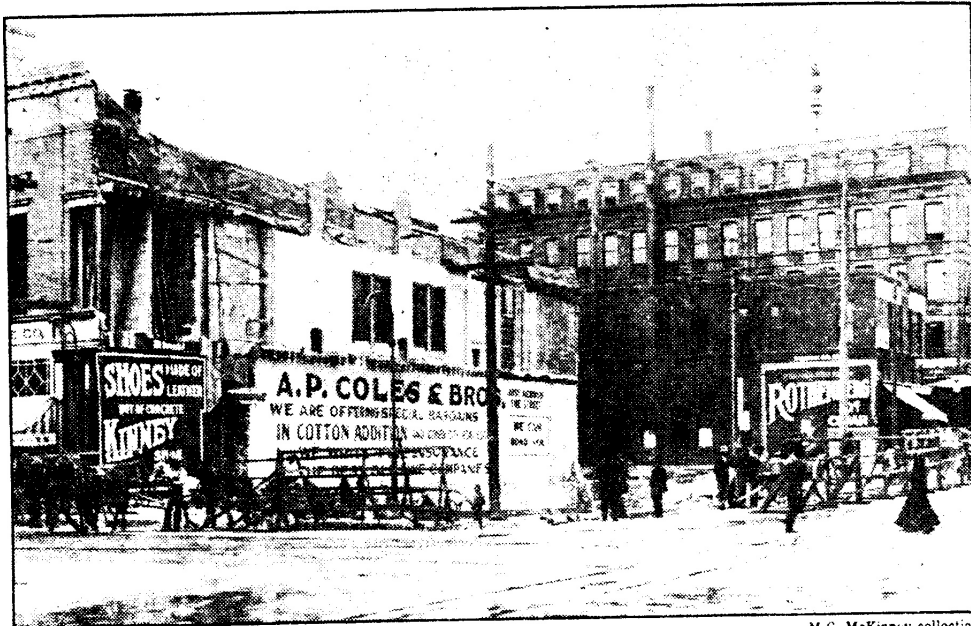


—M.G. McKinney collection

### *Old El Paso*

In 1910, the old Bronson Building, northwest corner of Oregon and San Antonio streets, was razed, and the seven-story American National Bank building was erected on the site. Excavation work in those days was done with the help of mule teams. This picture shows two of the teams, far left, hauling debris from the foundation area. American Furniture Co. is now in the old bank building. The five-story building at right in the background is Hotel Sheldon, where the Plaza Hotel is now.



— M.G. McKinney collection

### *Old El Paso*

In 1910, the old Bronson Building, northwest corner of Oregon and San Antonio streets, was razed, and the seven-story American National Bank building was erected on the site. Excavation work in those days was done with the help of mule teams. This picture shows two of the teams, far left, hauling debris from the foundation area. American Furniture Co. is now in the old bank building. The five-story building at right in the background is Hotel Sheldon, where the Plaza Hotel is now.