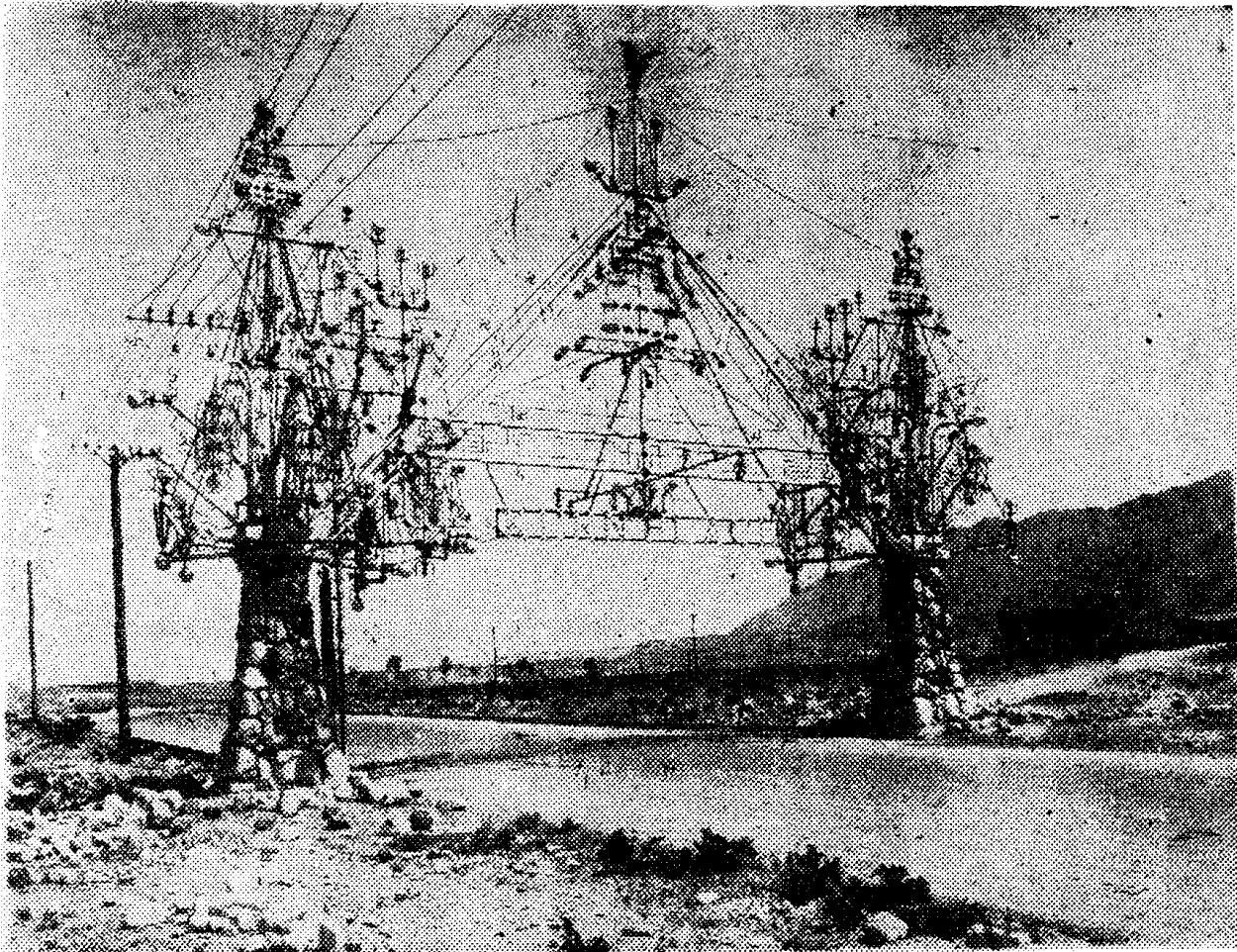


Know El Paso No. 6



—Aultman-Chamber of Commerce Collection

KERN PLACE IN 1916—This curious archway, suggesting lighted Christmas trees, a radar tower or a candelabra maker's nightmare, was erected by the late Peter Edward Kern, founder of Kern Place, at North Kansas street and Robinson boulevard. Kern was a colorful pioneer jeweler who lived here in 1881, spent 12 years in the Yukon, and returned to open Kern Place in 1913.