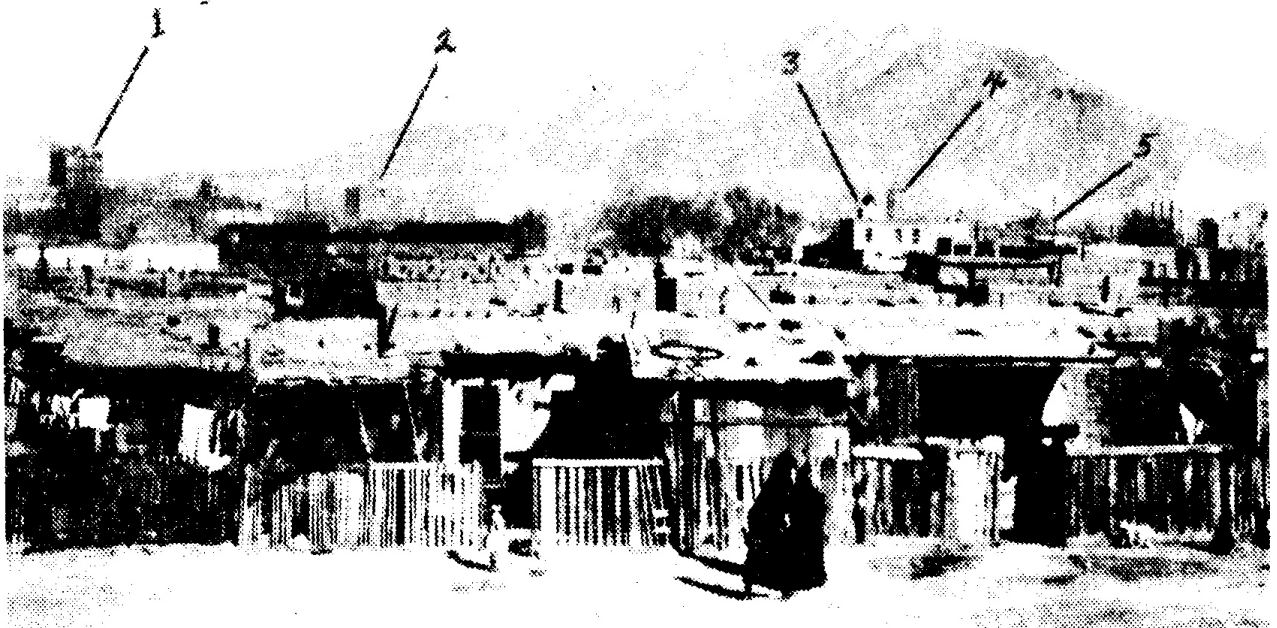


In Old El Paso

This is the Chihuahuita area of South El Paso in about 1913, looking north from the U.S. Immigration Service Building at the Santa Fe Street bridge. In the foreground is 10th Avenue, between Santa Fe and El Paso streets. Arrow 1 notes the Mills Building; arrow 2 the E.P. & S.W. Building at North Stanton and Franklin Avenue; arrow 3 the Mexican Methodist Episcopal Church at Fourth and South Stanton; arrow 4 the County Courthouse, and arrow 5 the old Douglass School at Fourth and South Kansas.



In Old El Paso

Jan. 13 1913

This is the Chihuahuita area of South El Paso in about 1913, looking north from the U.S. Immigration Service Building at the Santa Fe Street bridge. In the foreground is 10th Avenue, between Santa Fe and El Paso streets. Arrow 1 notes the Mills Building; arrow 2 the E.P. & S.W. Building

at North Stanton and Franklin Avenue; arrow 3 the Mexican Methodist Episcopal Church at Fourth and South Stanton; arrow 4 the County Courthouse, and arrow 5 the old Douglass School at Fourth and South Kansas.