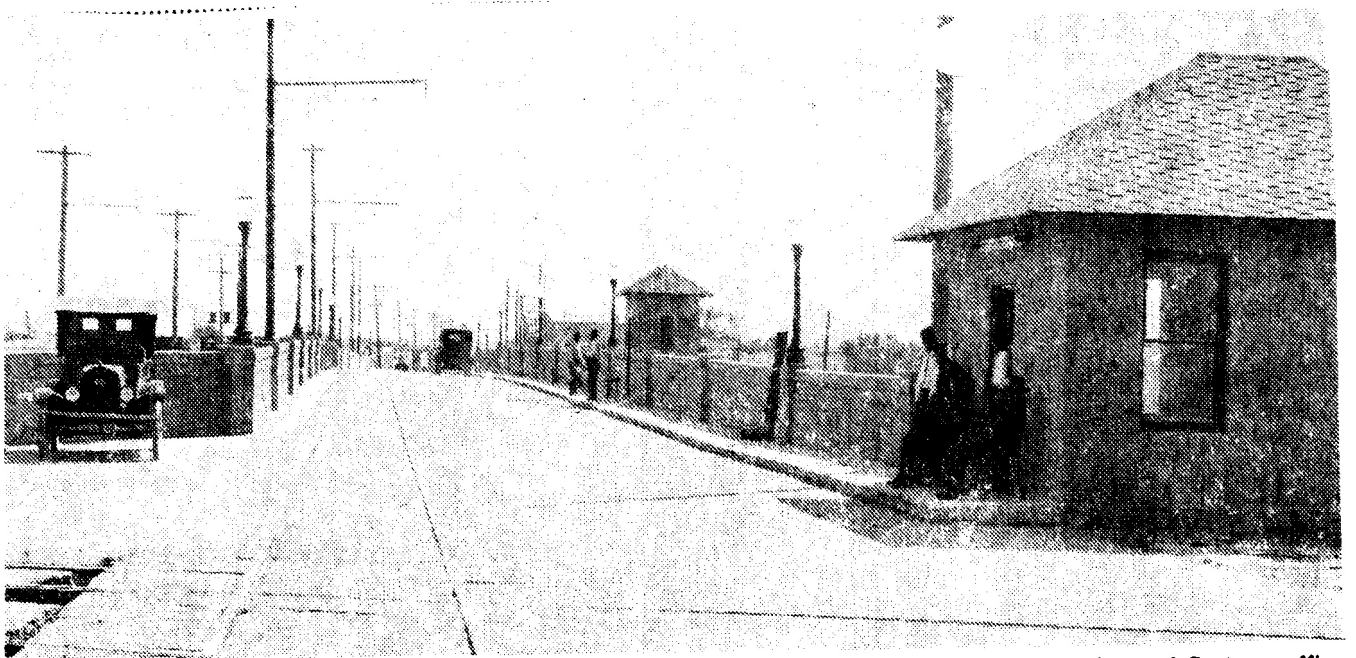


IN OLD EL PASO—Traffic over the old Stanton Street bridge to Juarez was at a bare minimum when this picture was taken on a sunny afternoon in the 1930s. One auto has passed the crest of the bridge on to Avenida Lerdo and a lone pedestrian, center, is conversing with the toll booth attendant. At right is the U.S. Immigration and Customs office and across the street left, is a Model 'T' Ford that probably belonged to one of the Immigration crew. The busy U.S.-Mexico Friendship Bridge now spans the Rio Grande at this site.



IN OLD EL PASO — Traffic over the old Stanton Street bridge to Juarez was at a bare minimum when this picture was taken on a sunny afternoon in the 1930s. One auto has passed the crest of the bridge onto Avenida Lerdo and a lone pedestrian, center, is conversing with the toll booth atten-

dant. At right is the U.S. Immigration and Customs office and across the street, left, is a Model 'T' Ford that probably belonged to one of the Immigration crew. The busy U.S.-Mexico Friendship Bridge now spans the Rio Grande at this site.