

Ysleta district offered bond issue

MAR 24 1982

By Patricia Lochbaum
El Paso Herald-Post

Ysleta voters will be offered a \$63.5 million bond issue in three propositions: an "essentials" list estimated at \$54.1 million, 15 other projects for \$9.39 million and a third proposal for bond-funded financing.

The financing proposal would allow the Ysleta district to sell bonds, invest the money and use the dividend to help pay off the bond issue.

"IF WE SOLD \$10 million the first year, we could save about \$3 million over the time of the issue," Superintendent Charles Benson said. "The bond issue could be retired two to three years earlier under this plan."

School officials said Tuesday the figures for the bond issue and the individual projects are draft estimates and will be rechecked before a 5:30 p.m. board meeting Thursday.

The draft essentials list includes:

— Construction of a \$3.5 million elementary

relieve Tierra del Sol, three \$3 million elementaries to relieve LeBarron Park, Marion Manor and Pasodale and Capistrano; and a \$6.5 million high school to relieve Ysleta High School for a total of \$19 million in new construction.

— \$2.35 million in land acquisition for the schools.

— \$15.8 million in major additions. This includes 12 rooms for Glen Cove, \$800,000; 33 classrooms for Hanks High School plus expanded library, hand, athletics and field house facilities, \$4.6 million; shops and rooms for 25 new programs at Ysleta Vocational High School plus faculty space, \$3.2 million; 20 classrooms at Presa plus library and dining space, \$1.1 million; 18 classrooms at Valley View plus library expansion, \$1 million, and 15 classrooms at Riverside High, \$1 million.

— \$1.4 million in renovations, including \$300,000 for library, P.E. and athletic expansion at Eastwood, \$800,000 to convert Ranchland to a middle school.

— \$750,000 to convert Bel Air Middle to administrative use, \$2.5 million for warehouse and main-

tenance center at the central office, and \$100,000 for a Northeast bus fueling center.

— \$2.06 million in architectural, engineering and legal services and \$5.06 million for equipment and furniture for the five-year plan.

Proposition 2, referred to by school officials as the "nice to have" list, includes these projects and rough estimate costs:

— Centrally located district auditorium, \$3 million.

— Junior high gymnasiums for Eastwood, Valley View, Riverside, Parkland and Ysleta, plus expanded kitchens at seven schools, \$4,075 million.

— Sidewalks and development, \$1.2 million, and equipment, \$884,000.

TRUSTEES ASKED officials to prepare a cost estimate Thursday on a new Lower Valley elementary instead of Presa additions. The item could add \$1 million to the bond issue cost.

Trustee Chilo Madrid suggested saving money by using old architectural plans instead of paying for new services.

"We need a good explanation of all the expendi-

tures because the taxpayers need to know exactly what we propose to do," added trustee Edd Fifer.

Madrid fielded some fire Tuesday at a meeting of Ranchland parents who said they would vote against the bond issue if their children are reassigned to Del Norte Elementary across hazardous Hunter Drive.

IN OTHER BUSINESS Tuesday, the board:

— Heard a complaint from Hanks High School parents about a decision not to pay for school choir robes. The board asked administrators to work up a financing proposal for the Thursday meeting.

— Named Abelardo Trujillo principal of Presa and named Arthur Soderstrom to replace Trujillo as assistant principal at Marion Manor. Soderstrom's job as principal at the Ysleta Learning Center is open pending a promotional search.

— Heard a suggestion from parent Carlos Corella to switch to year-round schooling, saving some \$20 million in building costs. Trustee Jim Russell said the switch would cost at least \$23 million a year.

'Schools need immediate attention'

Proposition would pay for repairs

Second of a three-part series
By Patricia Lochbaum
El Paso Herald-Post

Proposition 2, the heart of the \$63.5 million Ysleta bond issue, includes projects for all 46 schools in the district.

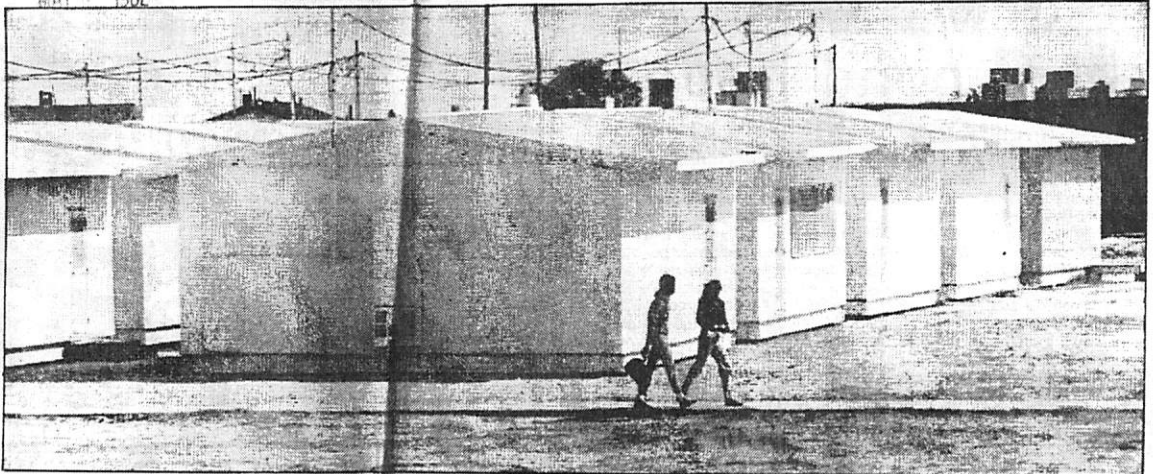
The \$54.2 million proposition provides 333 new classrooms and \$9.7 million in major repairs and renovations for the seventh fastest-growing district in the state.

IF PROPOSITION 2 does not pass, overcrowded schools could go on double shifts, Superintendent Charles Benson said. The tax rate could increase as much as 10 cents per \$100 of valued property next year to pay for critical repairs, he added.

"Several of our schools need immediate attention," Benson said. "The repairs are on our top priority list."

Ysleta Independent School District now houses 44,829 students in 46 schools and 143 portable classrooms, the equivalent of another five schools.

Nearly 2,000 new students are expected in September. Enrollment will top 50,000 in four years.



These portable classrooms at Maple High School will be replaced if the proposition 2 of the bond issue passes.

Herald-Post photo by John Hopper